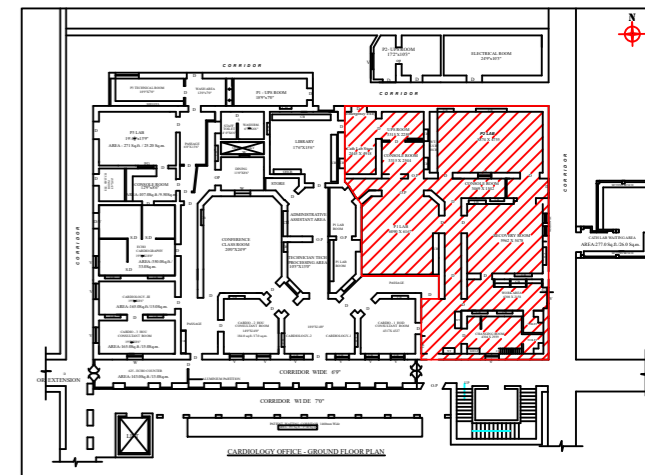


KEYPLAN:-

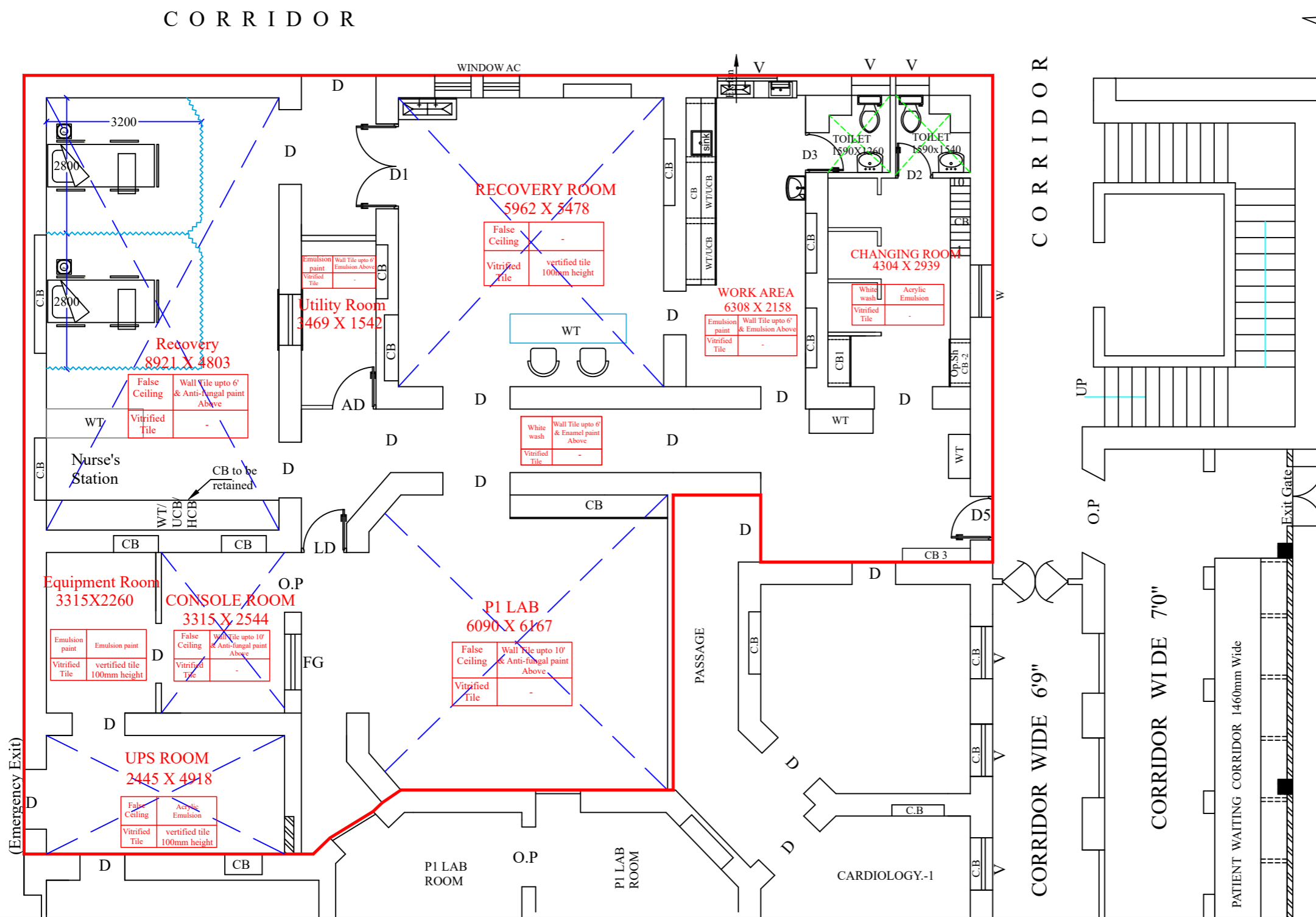


REFERENCE:

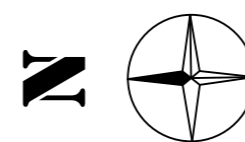
- PROPOSED SHOWN IN
- EXISTING SHOWN IN

REFERENCE FOR MATERIAL FINISHING DETAILS

ROOF	WALL
FLOOR	SKIRTING



**CARDIOLOGY OFFICE - GROUND FLOOR PLAN
MATERIAL FINISHES PLAN**



TENDER PURPOSE ONLY

CHRISTIAN MEDICAL COLLEGE -VELLORE.

MODIFICATION OF EXISTING P1 & P2 LAB TO CATH LAB IN MAIN BUILDING GROUND FLOOR AT CMC TOWN CAMPUS

GROUND FLOOR PLAN (PART) **FINISHING SCHEDULE**

CHKD BY: DEVAGI	DATE : 13.05.2024	PLANNING ENGINEER
DRAWN: YAMUNA	DRG.NO: CMC/GF/C/03	